



# RULLIT CARGO

**Our mining solutions are worth  
their weight in gold.**

# ROLLIT CARGO



# WORLDWIDE

[www.rollitcargo.com](http://www.rollitcargo.com)

# YOUR

**01** STORAGE & FACILITIES

# MINING

**02** MAINTENANCE SERVICES

# EQUIPMENT

**03** PORT HANDLING & LABOUR

# OUR

**04** TRANSPORT & SHIPMENTS

# CONCERN

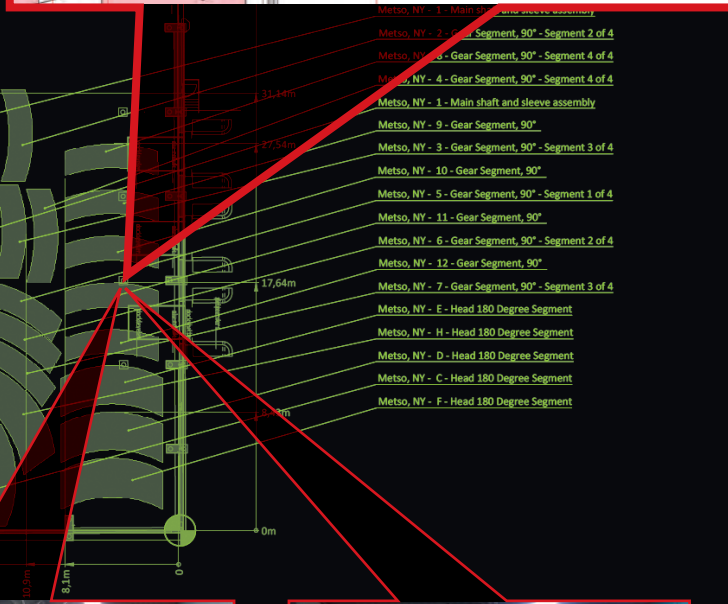
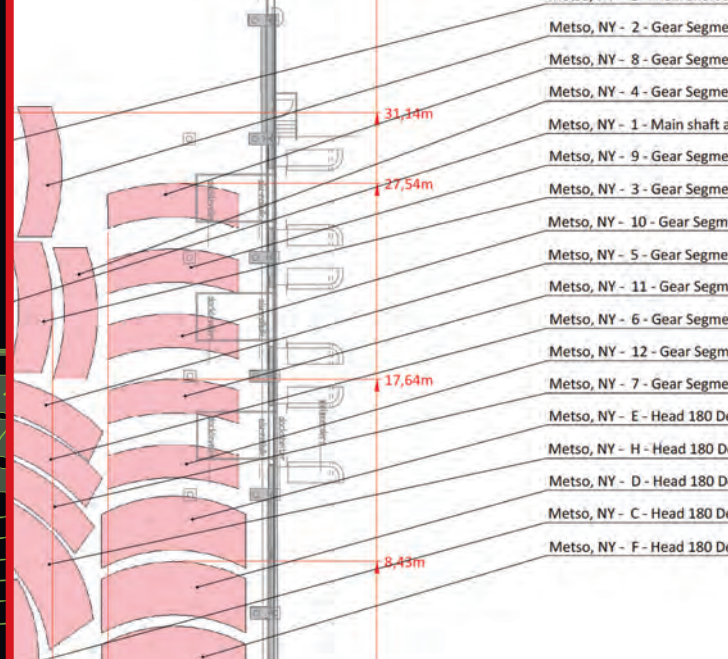
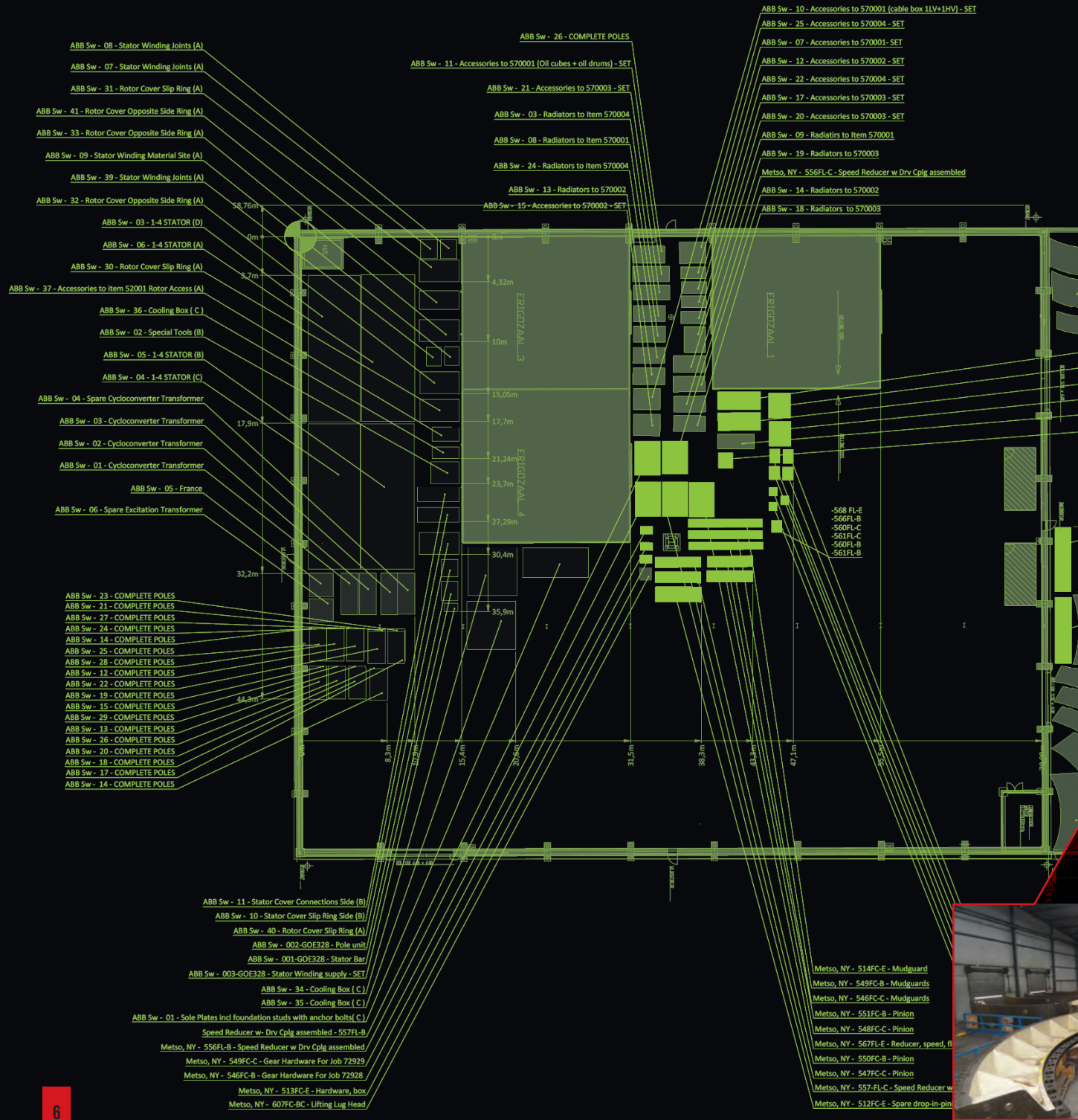




## 01 STORAGE & FACILITIES











**ASSET-BASED**

You will dig Rollit Cargo. We are the safe and smart choice when it comes to storing your mining equipment.



**FIRE DETECTION  
SYSTEMS**

**ISPS  
COMPLIANT**

**WAREHOUSES**







**WATER  
BOUND**

**DEDICATED  
TERMINALS**

**OPEN QUAY**



**TEMPERATURE  
CONTROLLED**



**CLIMATISED**



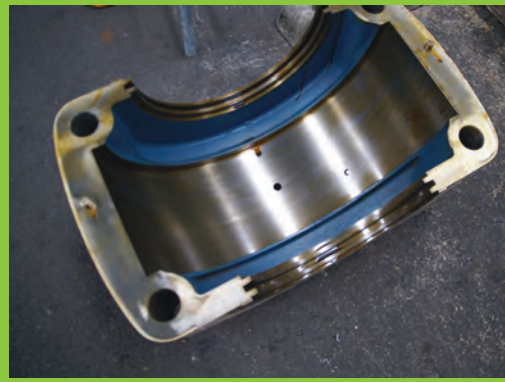




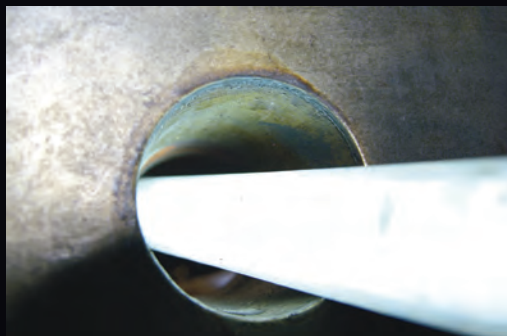
## **02** MAINTENANCE SERVICES





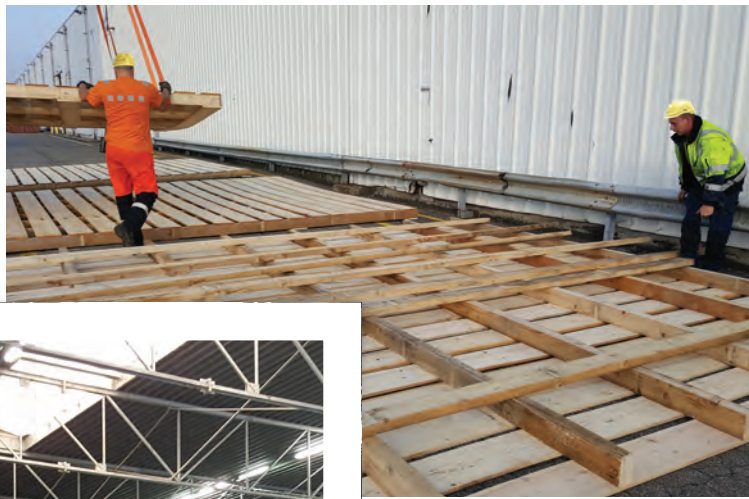


## REMEDIATION





# PACKING



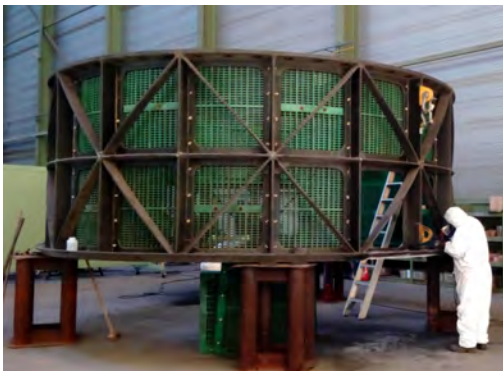
Keep your mining equipment in shape.  
**Trust Rollit Cargo:** we are a mine of high-grade expertise and precious experience.



# CARGO

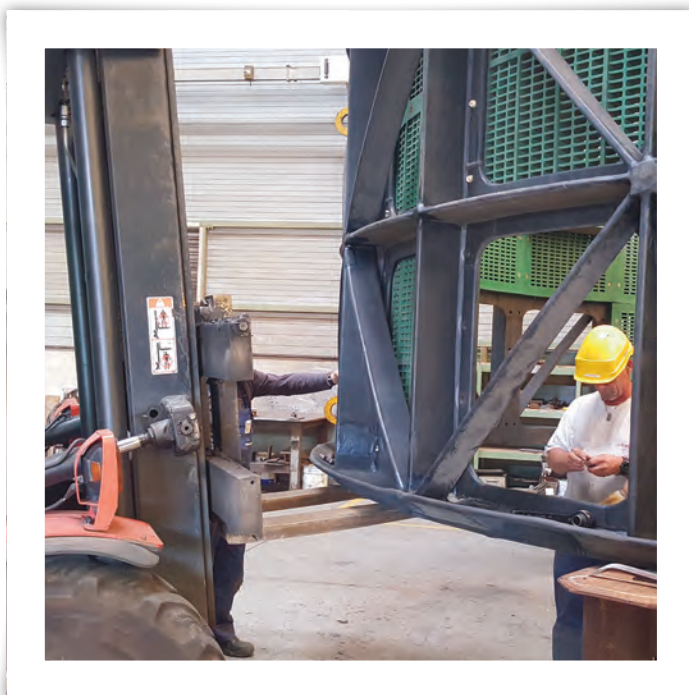


## MAINTENANCE



[PROJECTS@ROLLITCARGO.COM](mailto:PROJECTS@ROLLITCARGO.COM)

## REPAIRS







### **03** PORT HANDLING & LABOUR







SKILLS

# ROLLIT CARGO



TRAINED  
PERSONNEL



Our highly trained workforce are second to none. Because there's no second place when you choose Rollit Cargo: we go for the very best possible outcome.





# TRANSHIPMENT



Faster. Higher. Stronger. Like Olympic athletes, **we strive for the best** and we welcome challenges. **Rollit Cargo** can handle anything: your mining equipment is in safe hands.







## 04 TRANSPORT & SHIPMENTS





# EXCEPTIONAL TRAILERS



SPMT'S

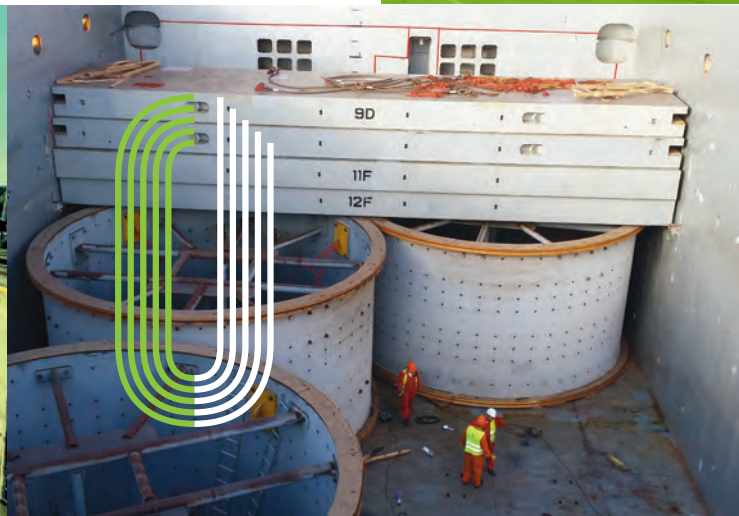






# WATER TRANSPORT

Rollit Cargo is a mother lode of transport solutions. By land or by water: we get any load to its destination, we turn every transport into a success. Rollit Cargo has the know-how and the equipment to set any project in motion.







**Are you looking for a partner  
who is the gold standard when it  
comes to handling, servicing and  
storing your mining equipment?  
Dig no further: put your trust  
in Rollit Cargo.**

**[www.rollitcargo.com](http://www.rollitcargo.com)**

[projects@rollitcargo.com](mailto:projects@rollitcargo.com)

T +32 (0)3 800 55 59

ANTWERP

Belgium

**ROLLIT CARGO**

